

Journal #3198

from sdc

9.11.14

Moapa Update

Sovereignty Matters

Native Seeds/SEARCH Announces New Programs

Linking Edible Arizona Forests

Meteorologists Predict Record-Shattering Snowfall Coming Soon

Call for proposals for Museums and the Web 2015

3-D Printed Houses

Reno Youth Network website is now live

US Attorney General Eric Holder Announces Expanded DEA Effort to Fight Rx Abuse

Peltier Rally and March

Festival of the Americas

Launch of Adrian Louis' "Fire Water World and Among the Dog Eaters"

2014 THRIVE Conference

Moapa Update

[Lisa Christensen](#) 20 Homes damaged 90 people in shelters. Inter-Tribal Emergency Response Representative from Nevada went down to help. Clinic was damaged also.

[Haver Jim](#)

Sovereignty Matters. When Native nations make their own decisions about what development approaches to take, they consistently out-perform external decision makers on matters as diverse as governmental form, natural resource management, economic development, health care, and social service provision.

Institutions Matter. For development to take hold, assertions of sovereignty must be backed by capable institutions of governance. Nations do this as they adopt stable decision rules, establish fair and independent

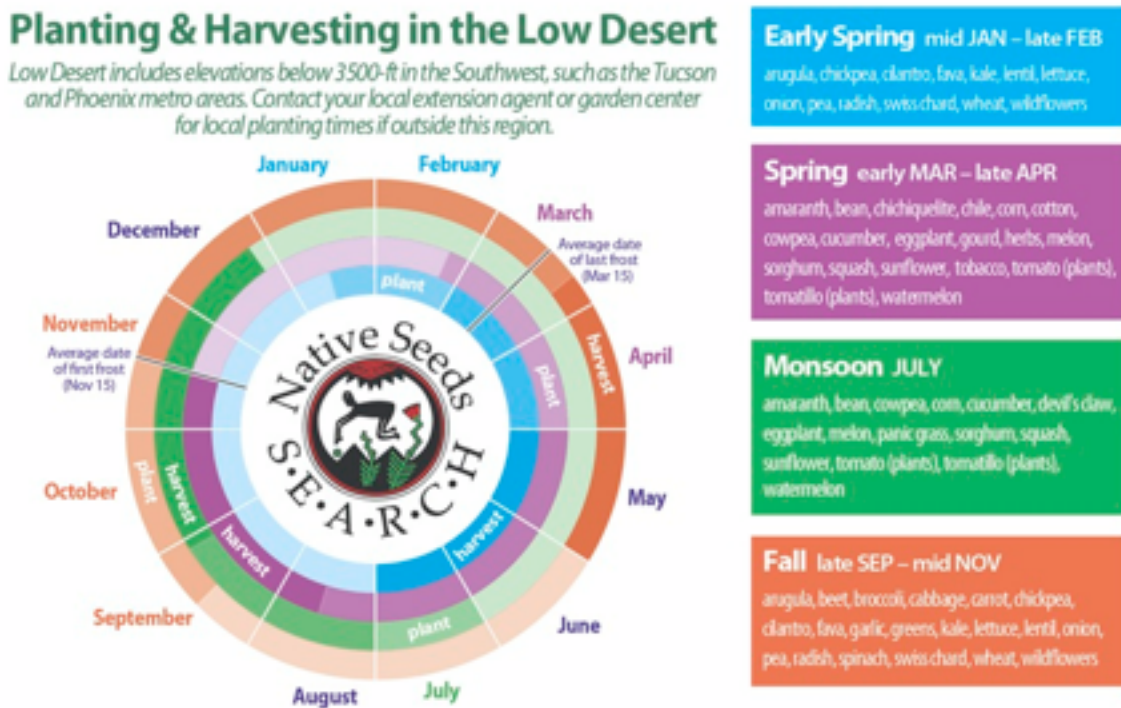


mechanisms for dispute resolution, and separate politics from day-to-day business and program management.

Culture Matters. Successful economies stand on the shoulders of legitimate, culturally grounded institutions of self-government. Indigenous societies are diverse; each nation must equip itself with a governing structure, economic system, policies, and procedures that fit its own contemporary culture.

Leadership Matters. Nation building requires leaders who introduce new knowledge and experiences, challenge assumptions, and propose change. Such leaders, whether elected, community, or spiritual, convince people that things can be different and inspire them to take action. (hpaied.org)

*September is the start of planting season for fall/winter gardens and spring wildflowers in low desert areas of the Southwest. If you are harvesting warm season crops, **don't forget to save your seeds.** Wondering what to do with all that amaranth? We have an [upcoming workshop](#) to help you with that.*



Native Seeds/SEARCH Announces New Programs

The Tucson, Arizona-based seed conservation nonprofit Native Seeds/SEARCH (NS/S) is pleased to announce two new programs to further its work in helping to build more sustainable and secure food systems across the Southwest region. The Seed Security Backup Program provides secure seed storage of outside seed collections within the NS/S seed bank facility. The Native American Bulk Seed Exchange Program shares large quantities of seeds from the NS/S

collection with growers working to increase the supply of traditional seeds and foods within indigenous communities.

The Seed Security Backup Program will open up the NS/S seed bank as a security backup repository for regional seed collections of tribal, community, and individual seed banks in the Southwest. Severe weather events or disease outbreaks can wipe out a farmer's field overnight. Facilities where seeds are stored may experience flooding, fire, theft, or other damage to its contents. For farmers who have adapted a crop to their unique location, such a loss could spell extinction for irreplaceable varieties. These losses occur all too frequently but can be minimized if backup seed collections are stored in other locations such as NS/S.

The backup process, referred to as "black boxing," involves the submission of a physical sample of seeds for safe storage within the NS/S seed storage vault. The seeds stored in backup are not intended to be the sole source of a seed variety but rather serve as an alternate sample in the event that the original seed is lost or damaged. Submitters will retain all rights to the seeds and will be able to withdraw the seeds from the NS/S seed bank whenever they have the need. The stored seeds will not be integrated into the NS/S collection unless both parties agree that this is appropriate. NS/S will work with submitters on appropriate packaging and store the backup collection in its walk-in-freezer (-18° C), standard conditions for long-term seed bank storage. Interested participants are encouraged to contact NS/S or visit the [Seed Security Backup Program](#) page for more information. Funding for this program is provided by a grant from the Gila River Indian Community.

The Native American Bulk Seed Exchange Program will facilitate access to large quantities of seeds for larger garden and farm plots. Through this program growers may obtain enough seed to plant several acres. The Bulk Seed Exchange Program expands our existing Native American Free Seed Program which provides 10 garden-sized seed packets to indigenous peoples from the Southwest each year. Providing access to bulk quantities of seeds will allow large quantities of traditional crops to be grown, thus ensuring access to traditional seeds and food within Native communities. The Bulk Seed Exchange Program is available for individual Native American farmers or organizations working with indigenous communities.

We encourage all participants in the program to save seeds for their future planting use as well as to return a portion of the saved seeds to NS/S to supply future Native American Bulk Seed Exchange requests from additional recipients. Through this arrangement, the bulk seed supplies will be continually replenished and the program will be able to expand to supply more growers, thus greatly increasing the availability of traditional seed and food within Native communities. Interested growers are encouraged to contact NS/S for more information or visit the [Native American Bulk Seed Exchange](#) page. Funding for this program is provided by The Christensen Fund.

Founded in 1983, Native Seeds/SEARCH maintains a living collection of nearly 2,000 varieties of traditional seeds adapted to the arid southwestern United States and northwestern Mexico. Through its conservation, seed access and education programs, NS/S is helping to address issues of food insecurity by building a more diverse, abundant, and delicious world.

NativeSeeds/SEARCH at FUZE SW Festival - September 12-14 Santa Fe, NM

Native Seeds is honored to be an invited participant in the second annual FUZE Southwest festival. :FUZE SW is a food conference where the past and present link the folklore and the customs that created a uniquely New Mexico culinary tradition are explored.....the focus this year is on Native American foodways.

NS/S Conservation Farm Manager Lynda Prim will be speaking on two panels and Conservation Intern Elizabeth Pantoja will also be in attendance. If you plan to be there, look for Lynda and Elizabeth to connect with Naqtive Seeds/Search

FUZE.SW is a food conference where the past and present, the folklore and the customs that created a uniquely New Mexico culinary tradition are explored. Enjoy lots of great food, drink, and camaraderie with fellow food enthusiasts. The focus this year is on Native American foodways. The "local" food movement that's swept the country is not so new. Indigenous people of the Southwest were "local" millennia ago. Learn how traditional indigenous practices can better inform us and our various culinary traditions today.

FUZE.SW's mission is to study, celebrate, and appreciate New Mexico's diverse cultures as expressed through its food, art, and especially its history.

FUZE.SW 2014 will take place on Museum Hill at the Museum of International Folk Art (*one of my favorite....sdc*)

~~~~~

**Linking Edible Arizona Forests**

**Monday, September 15, 6pm** NS/S Conservation Center 3584 E. River Rd., Tucson, AZ  
Free with a \$10 suggested donation.

Come hear about UA LEAF efforts to harvest fruit trees on the University of Arizona campus, and the upcoming statewide project by the LEAF Network to promote the care and harvesting of "edible" trees – those with fruits, nuts, pods and other tasty produce. The network is launching a federally-funded project that will yield a guidebook, a website with searchable information, and a series of workshops to facilitate the planting, care and harvesting of edible trees.

\*\*\*\*\*

**2014 AASLH Online Conference - September 18-19**

Held every year in conjunction with the Annual Meeting, the [AASLH Online Conference](#) provides an opportunity for you, your colleagues, and volunteers to attend the annual meeting virtually.

Each session is broadcast live from the Annual Meeting. All presentations have been reworked for a live audience. See slides, ask questions, and interact online with presenters and the virtual audience in these live broadcasts from the Annual Meeting.

**Take home real ideas and solutions to help you Do Good History! Registration closes September 17.**

[Register Now!](#)

**Member Pricing**

**\$60 Individual**

**\$100 Group**

**\$120 Group w/multiple logins**

**Nonmember Pricing**

\$110 Individual

\$150 Group

\$180 Group w/multiple logins

**Special Pricing**

Institutional Contributing, Supporting, Sustaining, and Partner Level Members! \$75 flat fee, multiple logins

---

**2014 Online Conference Sessions:**

**Many Small Surveys, One Big Impact** – Using examples from collaboration among fifteen Minnesota Historical Society sites, panelists explore evaluation challenges, provide do-it-yourself tools, and discuss how to use results effectively.

**Telling a Whole History: Methods of Interpreting Domestic Servants in Historic House Museums**

- Discuss methods and strategies for revitalizing interpretation in historic house museums to include the voices of domestic servants.

**Museum Management Tune Up** - In this session, you'll evaluate your own skills in the following areas: employee assessment and review, communication, time management, and work relationships.

**Your Most Valuable Partnership: Engaging Your Board to Ensure Success and Sustainability** - Join colleagues from around the country to identify strategies you can use right away to ensure your board is engaged and effective.

**Field Services Alliance Presents Navigating Legal Landmines in Museums and Archives** - This session addresses legal concerns surrounding oral history, collections, and digital copyright to help increase your legal literacy in recognizing and understanding the various concerns organizations face in these areas.

**Support Young Children, Grow Future Audiences** – This session considers the impact building relationships with young children and their families will have on the future of your institution.

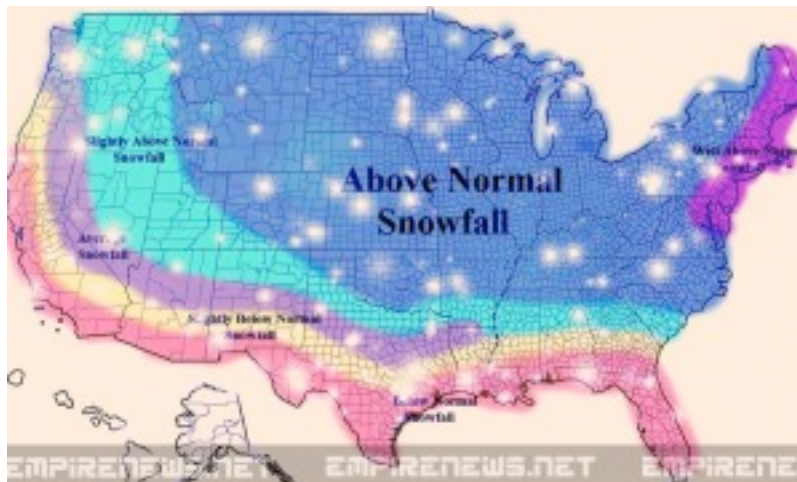
\*\*\*\*\*

**Predict**

**Snowfall**

SILVER  
Maryland -  
will hear a  
in the next

and  
experts at



**Meteorologists  
Record-  
Shattering  
Coming Soon**

SPRING,  
Chances are you  
lot about El Niño  
month or two.  
Meteorologists  
weather science  
the National...  
empirenews.net

\*\*\*\*\*

We are delighted to announce that we have launched the **call for proposals for Museums and the Web 2015** (MW2015). MW2015 is the 19th annual Museums and the Web conference and will be held in Chicago April 8-11, 2015 at The Palmer House.

**The call for proposals closes September 30th**

The MW2015 program is built from the ground up, based on your suggestions for sessions, papers and presentations. Proposals are encouraged on any topic related to museums creating, facilitating, delivering or participating in culture, science and heritage through networked technologies – wherever the network may reach.

[Guidelines for Proposals](#) | [Terms and Conditions](#) | [Submit your Proposal](#)

There are more than a dozen ways to participate in Museums and the Web!

- **Contribute to MWX**, Museums and the Web's new digital exhibition initiative: propose exhibits and interactive experiences as well as written papers and presentations about transformative uses of technology in museum studies, digital curating and/or contemporary art practice. Full papers (required, up to 5,000 words) will be peer-reviewed and considered for publication in the digital and printed proceedings of the conference. Sept 30 is the deadline for formal papers and sessions; Dec 31 for demonstrations of digital experiences emerging from or inspiring contemporary art practice.
- **Offer a Pre-conference Workshop: Are you an expert in your field?** Share your expertise by leading a half-day or full-day pre-conference workshop! Workshops are held the day before the conference begins and workshop leaders are compensated for their teaching. No written paper is required.
- **Present a Formal Paper:** Share your leading work in the field through a written paper (required, up to 5,000 words) and an oral presentation in a conference session (approx. 20 min. plus discussion). All formal papers are published on the Museums and the Web site, and selected papers are published in the online and printed proceedings of the conference.
- **Lead a Professional Forum:** Convene a one-hour discussion or debate about timely and critical topics of interest to the museum community. No written paper is required.
- **Teach a How-to Session:** You have one hour to demonstrate and teach a practical skill or best practices for a museum topic. A written version of your session (required, up to 2,500 words) will be published on the Museums and the Web site to serve as an on-going reference both for attendees of your session and others.
- **Demonstrate your project** and explain the designs and the decisions that went into it to colleagues in an exhibit-booth setting. Demonstrations are only open to museum professionals and projects created in a non-profit environment. Commercial organizations are invited to demonstrate their products and projects in Exhibitor Briefings.
- **Give a Lightning Talk** in a 1.5 hour session that includes 6 lightning talks of 7 minutes each plus plenty of time for questions and discussion. Slides and recordings of the lightning talks will be published on the Museums and the Web site, and presenters are invited to blog about their topics (up to 1,000 words) on the MW site.

- **Propose and lead an Unconference Session:** topics are selected by attendees during the first day of the conference so the conversation can continue throughout our time together.
- **Participate in a Crit Room:** Panels of leaders in the museum field will provide a free assessment of your web or mobile project for accessibility and other best practices. Sign up before the conference for a critique on a first-come, first served basis (approximately four projects can be assessed in each 1.5 hour crit session).
- **Participate in a “Birds of a Feather” round-table:** lead the discussion or dip into several while enjoying breakfast with colleagues. Topics are proposed by participants during the MW conference in the run-up to the breakfast.
- **Participate in Best of the Web:** propose your project or vote for your favorites! Help us share the best of museums’ digital work in a wide range of categories to inspire the global community. Nominations for the Best of the Web awards open in February each year.
- **Exhibit your commercial products and services in the Exhibit Hall:** Give an Exhibitor Briefings. on recent projects and new commercial products. Be there: the best part of MW is always meeting informally with some of the most creative and innovative museum professionals from around the world and enjoying the warmth and generosity of this community. Join us!

Performances? Hack-a-thons? Maker Faires? Other interactions or services? Propose any other format of participation + explain how it works. We’re open to new ideas.

Many thanks for your help! We look forward to seeing you in Chicago!

Rich Cherry & Nancy Proctor Co-chairs, Museums and the Web 2015

\*\*\*\*\*

[Read the original story on ArchDaily by Rory Stott Chinese company WinSun Decoration Design Engineering has constructed a set of ten single story, 3D-printed ...](#)  
[www.huffingtonpost.com](http://www.huffingtonpost.com)



**When the missionaries came to Africa they had the Bible and we had the land. They said "Let us pray." We closed our eyes. When we opened them we had the Bible and they had the land.**

**- Bishop Desmond Tutu**

We are thrilled to announce that the **Reno Youth Network website is now live!** You can visit the online resource guide at [www.renoyouthnetwork.com](http://www.renoyouthnetwork.com)

· *Please note if you added the shortcut to your phone using the demo site link, the shortcut will need to be updated as the /demo link is no longer functional .*

To add the resource guide icon to your phone's home screen, visit the web URL: [www.renoyouthnetwork.com](http://www.renoyouthnetwork.com) in your phone's browser and then follow the instructions below depending on the type of phone you have:

iPhone: Once at the Reno Youth Network homepage, you will see a bar at the bottom of the page

In the middle there is a square box with an upward arrow

Touch the box then touch 'Add to Home Screen'

Select "add" at the top right of the screen and the icon is now added to your home screen

Android:

Once at the Reno Youth Network homepage

Press the menu button and then select the "Add to homescreen" option

The icon is now added to your start page

Although the search tool was made to be highly functional on phone, tablet, or laptop, if you have not yet checked it out on a laptop please do so. In most cases, service providers, referral agencies, and case managers in the region will be using the laptop to view and also to print results. We have also added a map feature so that youth can easily see how to get to the services they need, whether by car, bus, or bike.

PLEASE ALSO FORWARD THIS EMAIL TO YOUR FRIENDS AND WORK NETWORK. Although we will be doing outreach to spread the work, particularly with youth in middle and high schools, social networks are powerful ways to spread information. Please help us with that effort.

If you have any questions about the online resource guide, please do not hesitate to reach out!

Sincerely, Lyndsey Crossley, Executive Assistant, Community Foundation of Western Nevada  
1885 South Arlington Avenue, Suite 103 Reno, NV 89509  
775.333.5499 Office 775.333.5487 Fax [www.nevadafund.org](http://www.nevadafund.org)

\*\*\*\*\*

[Raquel ArthurAIM Northern Nevada Leonard Peltier Birthday Rally -March 4 Freedom](#)

Friendly reminder - **Peltier Rally and March** will be this friday 5:30 pm at ice skating ring ( next to Reno city hall ). Please bring signs -Free Peltier so those bystanders know why we are



marching. Share event with family and friends and let our elders know. As of today we have not confirmed any singers or drummers , we want all to understand the importance of fight for our brother and be willing participants as a community. Thank you , hope to see you Friday.

\*\*\*\*\*

Festival of the Americas Pow Wow Committee Presents

## **Festival of the Americas - Saturday & Sunday, October 4-5, 2014**

El Dorado County Fairgrounds, Placerville, CA

The Festival of the Americas Planning Committee, is not responsible for travel expenses, stipends, or lodging, except where previously agreed to in writing, and is not responsible for loss due to theft, accident or personal injury.

Absolutely no drugs, alcohol, or weapons. This is a smoke free event.

|                             |                             |                       |
|-----------------------------|-----------------------------|-----------------------|
| <b>Master of Ceremonies</b> | <b>Elmer Atlookan</b>       | <b>Ojibway</b>        |
| <b>Host Northern Drum</b>   | <b>Red Hoop</b>             |                       |
| <b>Head Man:</b>            | <b>Don LeDesma</b>          | <b>Mission Indian</b> |
| <b>Head Teen Boy:</b>       | <b>Angel Garcia-Daniels</b> | <b>Yaqui</b>          |

### **Grand Entry:**

**Saturday: 1pm & 7pm, Sunday: Noon**

**All Drums and Dancers Welcome**

- u Open to the Public, All are Welcome
- u Free Admission
- u Competition Dancing
  - u Drum Contest
  - u Open Gourd Dancing
- u Exhibition Dance Groups
  - u Native Arts/Crafts
  - u Native Food Vendors

We're Back

Visit our Festival of the Americas Website at <http://www.fotapowwow.org>

Pow wow information phone: 530-621-3096

Pow Wow info email: [foothill@innercite.com](mailto:foothill@innercite.com)

### **Pow Wow Head Staff**

|                           |                         |                           |
|---------------------------|-------------------------|---------------------------|
| <b>Arena Director</b>     | <b>Sam Johnson</b>      | <b>Washoe/Paiute</b>      |
| <b>Host Southern Drum</b> | <b>Southern Express</b> |                           |
| <b>Head Woman:</b>        | <b>Dolores LeDesma</b>  | <b>Navajo</b>             |
| <b>Head Teen Girl:</b>    | <b>Zenaida Arroyo</b>   | <b>Turtle Mt Chippewa</b> |

There will be a \$5 parking fee payable to the El Dorado County Fairgrounds.

For full poster: **Attachments:** [2014 pow wow flyer.pdf](#)

A BOOK LAUNCH FOR

*Fire Water World  
& Among the Dog Eaters*  
ADRIAN C. LOUIS

SEPTEMBER 15TH | 5-7 PM

GLYPH CAFE & ARTS SPACE  
804 NW COUCH ST.  
PORTLAND 97209

FEATURING JAY NEBEL  
& JERRY HARP

FREE. OPEN TO THE PUBLIC.  
\$5 OFF PAPERBACKS  
\$10 OFF HARDCOVERS



Read about Louis's *Fire Water World & Among the Dog Eaters*

**Read about Louis's  
*Archeology* (2012)**

*Thank you to Glyph Cafe & Arts Space for donating their venue for this event. Visit Glyph's website [here](#).*

*Thank you to the many generous individual donors and the following foundations, without whom the publication of *Fire Water World & Among the Dog Eaters* would not have been possible:*

Lannan Foundation  
National Endowment for  
the Arts  
The Libra Foundation  
Meyer Memorial Trust

*Tavern Books* is a 501(c)(3) not-for-profit publisher that exists to print, promote, and preserve works of literary vision, to foster a climate of cultural preservation, and to disseminate books in a way that benefits the reading public. Visit us at [www.tavernbooks.com](http://www.tavernbooks.com).

*Programs of Tavern Books:*

***The Living Library***

Our publishing program focusing on reprinting classic poetry collections that have gone out of print, as well as works in translation.

***The Honest Pint***

Our monthly print subscription series edited by Matthew Dickman, featuring essays by noted contemporary writers on poets and poetry.

***Wrolstad Contemporary Poetry Series***

Our annual submissions series open to female poets forty years of age and younger.

## **2014 THRIVE Conference: A Merging of the Northwestern Nevada Food Systems Summit and the Nevada Social Justice Institute**

**September 19, 2014** Location: Silver Stage High School, Silver Springs, Nevada

Please RSVP to Community Chest Inc online if you would like to attend: <http://communitychestnevada.net/about/thrive-conference/>

8:00 – Registration Opens

9:00 – Christy McGill (HCC) and Edrie LaVoie (LCHS) will give opening welcome remarks for the THRIVE Conference" remarks. Follow this link for Christy's remarks on creating thriving communities: <http://philanthropy.com/article/Leading-Change-in-Hard-Hit/145651>

9:15 – Why the statewide Nevada Social Justice Institute and the annual Northwestern Nevada Food System Summit merged to create the 2014 THRIVE conference - Erik Schoen of Community Chest Inc and the Human Services Network of Nevada. See this link for more information about Community Chest: <http://communitychestnevada.net/programs/>

9:30 – The poet Pan Pantoja will perform. [http://youtu.be/Fc3JAvafs\\_4](http://youtu.be/Fc3JAvafs_4)

9:45 – Break

10:00 – Speaker: Brian Williams of “Think Kindness” See his TEDx talk here: <http://youtu.be/N2vyLMAHPFw>

10:45 – Break

11:00 – Collaboration to Improve Access to Good Nutrition: Model Food System Improvement Initiatives in the Lyon County region: youth and adults leading unique and successful work on food systems in the region will explain their work. See this short video for some examples of work being done in the Lyon County region to improve access: <http://youtu.be/ellQp3Hlc6c>

11:45 – LUNCH featuring local produce, and "Community Advocate Hero" awards

12:45 – Collaboration to Improve Access to Health Care: The innovative program for a Health Services Hub being piloted in collaboration with Lyon County schools through a grant to Healthy Communities Coalition. See this example for background on need for more access to health care in rural Nevada: <http://youtu.be/W2NYk5AKj88>

1:30 – Break

1:45 – Closing Speaker: Nationally known speaker and writer Hildy Gottlieb. See her TED talk here: [http://youtu.be/9\\_yuwypm2Qc](http://youtu.be/9_yuwypm2Qc)

3pm– Close