

Journal #5680 from sdc 3.18.24

rPlus Hydro Pumped Storage Project in White Pine County

Honoring Tenaya Winder and Miranda George

From tribalbusinessnews.com

Nevada gets federal approval to test out Medicaid funds for housing

Proposed 'Prove It First' legislation seeks to protect Boundary Waters by restricting copper mining

New report details how 'land grabs' from tribes have enriched the University of Minnesota

9 Things to Know About the SEC's New Climate Rule and How It Affects You

For investors, climate risk becomes an important part of the traditional narrative.

Save the Dates: 2024 Karuk Women's TREX (Women are carryint fire)

Smith Library in Chautauqua NY has 1636 volumes under their "Native American" Collection

Abalone holds deep cultural significance for some California tribes

Be Strong

A red-tailed hawk led Crazy Horse to his hemblecha

Stop Clearcutting CA

Python farming could offer one of the most sustainable sources of meat in the world

Native groups sit on a treasure trove of lithium. Now mines threaten their water, culture and wealth

Court Documents Show FBI Sent Several Informants to Standing Rock Protests

Congratulations to Christine Thomas

Internship Opportunity with Travois

Impacts of court groundwater decision still a long way off, top water regulator tells lawmakers

A Total Solar Eclipse Is Coming. How Will Birds and Other Wildlife React?

Yes, Vikings Really Did Live in the Americas 1,000 Years Ago

Scholarships with April 27-29 Deadlines

Stella Ruth John

Clinton Eric John, Sr.



Please take action on this immediate threat to sensitive wildlife habitat, dark skies, outdoor recreation and tourism from the rPlus Hydro Pumped Storage Project in White Pine County. Your voice is needed now.

Dark skies, wildlife, water, recreation and Ely's scenic backdrop are all threatened by a crazy proposal from a Salt Lake City real estate developer, rPlus Hydro. The proposal would be located in the Duck Creek Range between Ely and High Schells Wilderness. rPlus Hydro plans to blast two massive, paved roads through the scenic limestone cliffs to the top of the Duck Creek Range cutting through critical big game and sage-grouse habitat. The project will require multiple shafts to be drilled through the range resulting in one million cubic feet of waste rock to

be dumped on the beautiful slopes that are the scenic vistas for the Nevada Northern Railroad tourist trains including the popular dark sky train. Of course there won't be dark skies there anymore if the pumped storage project is built. This project would forever alter the viewshed for Ely residents and forever sever seasonal movement corridors essential for elk, mule deer and other wildlife species.

The project's proponent, a company called rPlus Hydro, is a subsidiary of a Salt Lake City-based real-estate development company that plans to construct this project, then flip the project to NV Energy. The White Pine Pumped Storage Project is a proposed energy-storage project that aims to provide battery-like energy storage through a closed loop system of reservoirs – one atop the Duck Creek Range and another in the foothills of Steptoe Valley. No new energy will be generated from this project and because it would tap into grid-energy to pump water uphill, it will use more energy than it produces. This project is a means for revenue for rPlus Hydro and construction of this project would drain the water supplies of White Pine County and poses a severe threat to outdoor tourism, outdoor recreation, dark sky tourism, and sensitive wildlife and critical wildlife habitat. The project's proponent, rPlus Hydro, will be hosting a series of meetings in White Pine County – one in McGill on Monday, March 18th at 6pm at the Elementary School and another in Ely on Tuesday, March 19th at 6 pm at the Elks Lodge. We'll be there to set the record straight and raise our concerns.

Critical Threats to Wildlife:

As many as nine greater sage grouse leks (breeding sites) exist within and directly adjacent to the rPlus project site in the Duck Creek range and subsequently proposed 25+ miles of transmission line that would course westward from the Duck Creek Range project site, across Steptoe Valley to the Robinson Summit substation. In the rPlus Environmental Impact Statement (EIS), they cited the concern over disrupting sage grouse with construction, operation and annual maintenance of the pumped storage project, but dismissed this concern by stating that after they are finished with the project in thirty or more years, they would rehabilitate sage grouse habitat back to what it was before the installation and operation of the project. However, sage grouse are a very sensitive species that over deep time come to establish and seasonally revisit leks and nesting sites. Once these sites are disturbed, and especially, once grouse are unable to revisit such sites, they never again return. Also, once a lek is destroyed, many times, grouse fail to find other active leks and are thus omitted from the breeding population further threatening an already declining species that are facing extinction. Additionally, within the rPlus project boundary exists critical winter and summer habitat for elk and mule deer, and within Steptoe Valley, critical winter habitat for these ungulates is shared by pronghorn antelope, all of which rely on these areas for survival.

Threats to Outdoor Recreation:

Within the area rPlus proposes placing the White Pine Pumped Storage Project lies in dark skies relied upon by the county for tourism. Visitors from both within and beyond the nation travel to White Pine County to the foot of the Duck Creek Range to ride the Nevada Northern Railroad's Star Train. These dark skies would vanish with industrial lighting and operations associated with this project. The very vitality of the Nevada Northern Railroad, enjoyed by thousands of annual visitors for over 35 years will forever be changed. Outdoor recreation such as hunting, would be threatened by loss of public access. For all who enjoy and rely on White Pine County outdoor recreation of all types, the scenic viewshed is more than simply an aesthetic add-on. Rather, it is essential for those who live, recreate and visit the county whose viewshed is very important. This project will alter this experience with the massive, two-lane paved road zigzagging up the scenic limestone cliffs on the west face of the Duck Creek Range. This is not the legacy any development should leave behind for your children that ultimately places your outdoor recreation and heritage in the balance forever.



Wanda George-Quasula

"Happy International Women's Day to all the amazing women out there! Today, we want to give a special shoutout to two incredible women from my tribe the Duckwater Shoshone Tribe who inspire me and those around them every day.

First, we want to recognize our cousin, Tanaya Winder, a dedicated and compassionate community leader. She does Motivational Speaking, Poetry Readings, Creative Writing & Empowerment Workshops Music & Spoken Word Performances throughout Native Country. Her strength, compassion, and resilience are truly admirable and inspiring!

Secondly, we want to honor my daughter Miranda George. A trailblazing facilitator and advocate. She travels throughout Native Country in sharing her knowledge through workshops for prevention and awareness against domestic violence, sexual assault and teen dating violence. She is also an advocate for gender equality and creating safe spaces for our 2 Spirit / LGBTQ relatives. Her passion, drive, and fearlessness in breaking barriers and paving the way for safe spaces is truly inspiring.

To these two amazing women and to all the women around the world, thank you for your hard work, dedication, and unwavering spirit.

~~~~~  
**Nevada gets federal approval to test out Medicaid funds for housing**

\*\*\*\*\*

**Proposed ‘Prove It First’ legislation seeks to protect Boundary Waters by restricting copper mining** <https://www.minnpost.com/environment/2024/02/proposed-prove-it-first-legislation-seeks-to-protect-boundary-waters-by-restricting-copper-mining/>

~~~~~  
From tribalbusinessnews.com

The **Winnebago Tribe of Nebraska** scored a Congressional win in late February following the passage of H.R. 1240 in the House of Representatives, or the Winnebago Land Transfer Act. The bill would transfer nearly 1,600 acres of land in western Woodbury and Monona Counties back to the tribe. The land is currently owned by the US Army Corps of Engineers. The bill now heads to the Senate for its next steps, according to a [report](#) by 4 KTIV in Siouxland.

The **Nevada City Rancheria Nisenan Tribe** is raising funds through a nonprofit organization called **California Heritage: Indigenous Research Program**, or CHIRP, to purchase a 232-acre

tract near Nevada City. The tract hosts a historic Nisenan Village site called Yulića. The group hopes to raise \$2.4 million in total, with an initial goal of \$1.5 million by April 4 this year. More information on the potential land purchase and donating can be found [here](#).

An anonymous donor has gifted 78 acres in California to the **Nor Rel Muk Wintu Nation**, inspired by the global landback movement, per an announcement from the tribe. The deal was finalized in December 2023, giving the tribe - which does not have federal recognition - its first full landbase outside of an old school building purchased from Trinity County. Tribal chairperson John Hayward said the land would serve as a base for tribal development into the future, telling [North State Pacific Radio](#) that it was a “great, great feeling.”

The **Mattaponi Indian Tribe** stands to regain 2,400 acres following Virginia state legislation filed by Delegate Keith Hodges (R-Middlesex.) The bill seeks to authorize the transfer of land into state trust in King William County adjacent to the Mattaponi’s existing reservation, per a [report](#) from local paper, the Tidewater Review. The tribe purchased the land in 1999 through help from nonprofit organization **The Nature Conservancy**, then sold it to the Virginia state forestry department to protect it from title transfer issues pending an eventual acquisition into state trust.

The **Shingle Springs Band of Miwok Indians** has requested around 189 acres be placed into trust near its Red Hawk Resort and Casino, which in turn sits near Placerville, California. If approved, the tribe plans to use part of the land to build an event center adjacent to the existing casino, per a [report](#) by gaming industry trade publication Pechanga.net. The land would join around 200 acres being held on its behalf currently.

The **Cayuga Nation** bought 40 acres of land in late January in upstate New York. The tribe purchased the land for \$720,000 and an application to place the land into trust through the Bureau of Indian Affairs is underway, per a [report](#) by local publication Finger Lakes Times. Subsequently, the tribe has claimed that the drive-in now encroaches on their newly acquired parcel, alleging that the main entrance, some parking spaces, and part of the movie screen all occupy what is now tribally-owned land.

A village in Wisconsin is suing the federal government over its decision to return land to the **Oneida Nation** reservation, [according to this report](#) by Frank Vaisvilas of the *Milwaukee Journal Sentinel*. The village of Hobart, which is situated within the Nation's reservation, filed the lawsuit against the Department of Interior last November. A few weeks ago, the DOI issued its legal response and Oneida Nation filed a motion to intervene in the case.

The **Catawba Nation** has assumed full ownership over its Two Kings Resort Casino in Kings Mountain, North Carolina, taking over for former operating partner Sky Boat, LLC. Having completed a land into trust acquisition in 2021, the tribe plans to expand the casino - currently composed of prefab units - into a full range of restaurants, retail locations, a hotel tower and entertainment center. *Tribal Business News* has an expanded report on the casino expansion [here](#).

If you have news or information about landback acquisitions or deals involving tribal land, shoot me a note at coxendine@tribalbusinessnews.com.

New report details how ‘land grabs’ from tribes have enriched the University of Minnesota
by Ana Radelat 02/14/2024

~~~~~  
**9 Things to Know About the SEC’s New Climate Rule and How It Affects You**

For investors, climate risk becomes an important part of the traditional narrative.

<https://www.morningstar.com/sustainable-investing/9-things-know-about-secs-new-climate-rule-how-it-affects-you>

~~~~~  
Save the Dates: 2024 Karuk Women’s TREX June 22 - June 29

<https://sipnuuk.karuk.us> › [digital-heritage](#) › [women-they-are-carrying-fire-pa’asiktavaansas-kuniktáamvunatih-2023](#)

The Women They Are Carrying Fire - Pa’asik`tavaansas Kuniktáamvunatih ...

Summary: Interviews with participants of First Karuk Women's Prescribed Fire Training Exchange (KWTREX) Cultural Narrative: Film edited by- Bay laurel O'Connor. With special support from - Stormy Staats, Bruno Seraphin, Xatimniim Drake.

Indigenous women learn to protect their ancestral lands with fire

Nov 23, 2023 About 50 women came to Karuk country to train and learn about bringing fire back to the land, as their ancestors had for generations. ORLEANS, Calif. — On a nearly 45-degree slope along the ..
<https://www.azcentral.com> › [in-depth](#) › [news](#) › [local](#) › [arizona-environment](#) › [2023](#) › [01](#) › [30](#) › [indigenous-women-learn-to-protect-ancestral-lands-prescribed-burns](#) › [10398772002](#)

~~~~~  
*“Carry out a random act of kindness, with no expectation of reward, safe in the knowledge that one day someone might do the same for you.” – Princess Diana*

*Women’s History Month Celebration*

**VA** |  U.S. Department of Veterans Affairs  
Veterans Health Administration  
Providence Healthcare System



*March 27th, 2024  
12:00 - 1:00 PM  
5th Floor, Classroom 3*

*Guest Speaker:  
Maija Hill, US Army  
Narragansett Tribe*



The Smith Library in Chautauqua, NY, has 1636 volumes under their “Native American” Collection.....interesting collection: [https://catalog.smithlibrary.com/cgi-bin/koha/opac-search.pl?idx=&q=native+american&limit=&weight\\_search=1](https://catalog.smithlibrary.com/cgi-bin/koha/opac-search.pl?idx=&q=native+american&limit=&weight_search=1)



## [The Cultural Significance of Abalone - Visit California](https://www.visitcalifornia.com)

<https://www.visitcalifornia.com> > experience > cultural-significance-abalone

---

### [Be Strong](#)

Nominations are open for young people (10-17 yrs. old). Is your child passionate about kindness, prevent bullying, isolation, and helping others with life saving & improving mental health resources? (and needs volunteer hours) Apply now to nominate them to join our national Be Strong Student Rep Program! **[\(all programs are FREE and nominations from all cities/states are accepted\)](#)**

Be Strong's mission is to save and improve the lives of our youth by strengthening mental, e...



FORM ON FACEBOOK

APPLY HERE ==>

---

### [Crazy Horse Family/ECF](#)

**A red-tailed hawk led Crazy Horse to his hemblecha** (vision quest) location near Lake Sylvan. There he learned he would be a protector of the people. To honor the hawk, he wore two hawk feathers in his hair pointed downward. He never wore eagle feathers. The story of he and the hawk can be found in our book: <https://reelcontact.com/.../crazy-horse-the-lakota...> Wopila!

---

### [Stop Clearcutting CA](#)

[Our next Forest Protection Forum will feature Greg King, author of "The Ghost Forest: Racists, Radicals, and Real Estate in the California Redwoods."](#)

**Sign up here:** <https://sierraclub.zoom.us/.../tJIsde...> **MARCH 18 @ 4PM PST**

Greg King is an award-winning writer and activist who has spent decades researching redwood logging and preservation efforts. He is credited with spearheading the movement to protect the last ancient redwoods still standing outside of parks. King's recent book, *The Ghost Forest: Racists, Radicals, and Real Estate in the California Redwoods*, provides the first comprehensive account of the 150-year history of old-growth redwood logging. King is founder and executive director of Siskiyou Land Conservancy, a land trust that serves Humboldt, Del Norte, and Mendocino Counties.



**Python farming could offer one of the most sustainable sources of meat in the world, according to a new study**

Python produces large slabs of white meat similar to chicken filet.

You've probably read all kinds of stories about lab-grown meats, which might one day make industrial farms full of pigs, chickens, and cows obsolete. Unfortunately, the technology to grow a quarter pounder with cheese in the lab is just getting started, but some researchers might have discovered a new source of more sustainable meat — [farming pythons](#).

According to a new study published in Scientific Reports on Thursday, python meat is a less carbon-intensive and more resilient source of meat than chicken or beef thanks to the snakes' "extreme biology and evolutionary slant toward extreme resource and energy efficiency," a feature of their biological niche as an ambush predator. Pythons will eat very cheap sources of food, including rodents and fish meal, and can grow quickly while only being fed once a week. This makes python farming operations resilient to supply chain disruptions, and they're also able to survive extreme weather conditions "without suffering any ill effect," according to the paper.

Farmers in southeast Asia have historically incorporated pythons into their household livestock as a source of meat, with each butchered snake yielding "two enormous slabs of white meat similar to a chicken filet," which can be fried to have a "nice crispy crunch." Obviously, most people in the West might not be too open to eating snakes (though people seem fine with eating frogs, snails, and alligators), but this research might be the first step in making meat a little more climate-friendly.



The British Airways Concorde, one of only 20 of the supersonic aircraft to ever fly, has been en route back to NYC's [Intrepid Museum](#) after being sanded and recoated during several months of restoration.

~~~~~

This is an absolute “must read”, complete with video and readable charts.

[Native groups sit on a treasure trove of lithium. Now mines threaten their water, culture and wealth](#) (AP)

<https://apnews.com/article/lithium-water-mining-indigenous-cb2f5b1580c12f8ba1b19223648069b7>

“If the mines come, we’ll have money for a time. But then our grandchildren, our great-grandchildren – they’re the ones who will suffer,” she said. “I want to do everything possible to defend these lands, so they still have these fields, so they still have their waters.”

—Flores de Callata

~~~~~

**FBI Sent Several Informants to Standing Rock Protests, Court Documents Show**

*Alleen Brown, Grist*

Brown writes: "Until now, only one other federal informant was known to be in the camps."

**[READ MORE](#)**





Congrats!

---

## Internship Opportunity

Travois is happy to sponsor interns from Tribal colleges and programs across the country. As a small business, we typically have opportunities for one or two internships per summer.

Please reach out to Ashley Bland at [ashley@travois.com](mailto:ashley@travois.com) for additional information.

---

## **Impacts of court groundwater decision still a long way off, top water regulator tells lawmakers**

(Includes interesting line about “town” of 250,000 planned north of Las Vegas.

---

### *Calling on Citizen Scientists:*

## **A Total Solar Eclipse Is Coming. How Will Birds and Other Wildlife React?**

When the moon covers the sun, animals get weird. April’s eclipse gives scientists—and you—a chance to learn more about their responses. Here's how and where you can take part.

[https://www.audubon.org/news/total-solar-eclipse-coming-how-will-birds-and-other-wildlife-react?utm\\_source=pocket-newtab-en-us](https://www.audubon.org/news/total-solar-eclipse-coming-how-will-birds-and-other-wildlife-react?utm_source=pocket-newtab-en-us)

---

[discovermagazine.com](http://discovermagazine.com)

[\*\*Yes, Vikings Really Did Live in the Americas 1,000 Years Ago\*\*](#)

[\*\*New techniques for tree-ring analysis solidify the dates of North America's earliest known European settlers.\*\*](#)

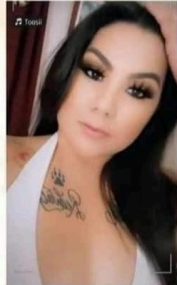
## Scholarships with April 27-29 Deadlines

|                                                                                          |          |                |
|------------------------------------------------------------------------------------------|----------|----------------|
| <a href="#">NHSC Scholarship Program</a>                                                 | Varies   | April 27, 2024 |
| <a href="#">SDC-Harris Education Scholarship</a>                                         | \$1,000  | April 27, 2024 |
| <a href="#">The Pearl Mae Foundation Scholarship for Healthcare and First Responders</a> | \$4,000  | April 27, 2024 |
|                                                                                          |          |                |
| <a href="#">Clem Judd, Jr. Memorial Scholarship</a>                                      | \$2,000  | April 28, 2024 |
| <a href="#">COMTO Philadelphia Chapter Scholarship</a>                                   | \$3,000  | April 28, 2024 |
| <a href="#">Edmund F. Maxwell Scholarship</a>                                            | \$20,000 | April 28, 2024 |
| <a href="#">Emma Nylen Charitable Trust Scholarship Program</a>                          | Varies   | April 28, 2024 |
| <a href="#">ILCA Scholarship Program</a>                                                 | \$10,000 | April 28, 2024 |
| <a href="#">IWSH Essay Scholarship Contest</a>                                           | \$2,000  | April 28, 2024 |
| <a href="#">Josie Rewald Memorial Community College Scholarship</a>                      | Varies   | April 28, 2024 |
| <a href="#">Linda Craig Memorial Scholarship</a>                                         | \$2,500  | April 28, 2024 |
| <a href="#">NCITD Scholarship Program</a>                                                | Varies   | April 28, 2024 |
| <a href="#">NPFDA Scholarship Foundation</a>                                             | \$5,000  | April 28, 2024 |
| <a href="#">NSPE-NH State Scholarship Program</a>                                        | \$1,000  | April 28, 2024 |
| <a href="#">NYCT Armenian Scholarships</a>                                               | \$6,000  | April 28, 2024 |
| <a href="#">R.W. "Bob" Holden Scholarship</a>                                            | \$2,000  | April 28, 2024 |
| <a href="#">SAME Seattle Post &amp; PSE&amp;SSF Scholarships</a>                         | \$2,500  | April 28, 2024 |
| <a href="#">Seattle Co-Arts Scholarship</a>                                              | \$2,000  | April 28, 2024 |
| <a href="#">SENEDIA STEM Scholarship</a>                                                 | \$1,500  | April 28, 2024 |
| <a href="#">SVCF James A. McCavitt and Annie LePors McCavitt Scholarship</a>             | \$1,000  | April 28, 2024 |
| <a href="#">Team See Possibilities Scholarship</a>                                       | \$5,000  | April 28, 2024 |
| <a href="#">The Agnes Cooke Scholarship</a>                                              | \$2,000  | April 28, 2024 |
| <a href="#">Western Colorado Horticultural Society Scholarship</a>                       | \$1,000  | April 28, 2024 |
| <a href="#">WHFF Plein Environmental Scholarship</a>                                     | \$15,000 | April 28, 2024 |
|                                                                                          |          |                |
| <a href="#">Druid Hills Golf Club Foundations Wayne Reynolds Scholarship</a>             | \$12,000 | April 29, 2024 |
| <a href="#">Lucile Murray Durkin Scholarship</a>                                         | \$2,200  | April 29, 2024 |
| <a href="#">Ralph G. Norman Scholarship</a>                                              | \$2,500  | April 29, 2024 |
| <a href="#">Society of Professional Journalists Buffalo Chapter Scholarship</a>          | Varies   | April 29, 2024 |

|                                                                                            |          |                |
|--------------------------------------------------------------------------------------------|----------|----------------|
| <a href="#">AAA - Incitec Pivot Limited Veteran Scholarship and Internship</a>             | \$40,000 | April 30, 2024 |
| <a href="#">AAUW Aurora Colorado Branch Scholarships</a>                                   | \$2,000  | April 30, 2024 |
| <a href="#">AEF Jodi Callahan Memorial Graduate Scholarship</a>                            | \$2,000  | April 30, 2024 |
| <a href="#">AIGA Worldstudio Scholarships</a>                                              | \$5,000  | April 30, 2024 |
| <a href="#">Air Force Association Scholarships</a>                                         | \$20,000 | April 30, 2024 |
| <a href="#">Allied Health Scholarship</a>                                                  | Varies   | April 30, 2024 |
| <a href="#">American Culinary Federation Scholarships</a>                                  | \$2,500  | April 30, 2024 |
| <a href="#">Andrew Budraitis Foundation Lehigh Valley Scholarships</a>                     | \$7,500  | April 30, 2024 |
| <a href="#">ANS Savannah River Richard "Dick" Benjamin Memorial Scholarship</a>            | \$2,500  | April 30, 2024 |
| <a href="#">Appaloosa Youth Foundation Continuing Education Scholarship</a>                | \$1,000  | April 30, 2024 |
| <a href="#">Appaloosa Youth Foundation Territory Scholarship</a>                           | \$1,000  | April 30, 2024 |
| <a href="#">Ari's Bears Scholarship</a>                                                    | \$1,000  | April 30, 2024 |
| <a href="#">ASCE New Hampshire High School Scholarship</a>                                 | \$1,000  | April 30, 2024 |
| <a href="#">Association of Women Contractors Scholarship</a>                               | \$2,000  | April 30, 2024 |
| <a href="#">Axia Public Relations Scholarship</a>                                          | \$2,000  | April 30, 2024 |
| <a href="#">Bags of Love Foundation Scholarship</a>                                        | \$2,500  | April 30, 2024 |
| <a href="#">Blue Collar Brain Trade School Scholarship</a>                                 | \$2,500  | April 30, 2024 |
| <a href="#">BPWSOC Voice of Working Women Education/Equipment Scholarship</a>              | \$1,000  | April 30, 2024 |
| <a href="#">BRAAF Roger J. Clouatre Scholarship</a>                                        | \$500    | April 30, 2024 |
| <a href="#">Brown MAE Foundation Healthcare Scholarship</a>                                | \$1,000  | April 30, 2024 |
|                                                                                            |          |                |
| <a href="#">California State University- Fullerton Daphne Tinsley Memorial Scholarship</a> | \$1,000  | April 30, 2024 |
| <a href="#">Chester Burger Scholarship for Excellence in Public Relations</a>              | \$1,000  | April 30, 2024 |
| <a href="#">ChiroHealthUSA Foxworth Family Scholarship</a>                                 | \$15,000 | April 30, 2024 |
| <a href="#">College Ave \$1,000 Scholarship</a>                                            | \$1,000  | April 30, 2024 |
| <a href="#">Colorado Women's Education Foundation</a>                                      | Varies   | April 30, 2024 |
| <a href="#">Continued Achievement Scholarship</a>                                          | \$2,000  | April 30, 2024 |

IN LOVING MEMORY OF  
*STELLA RUTH JOHN*

March 15, 1996 - March 7, 2024  
AKA  
"CHOMPERS"



SERVICES  
Monday March 25, 2024  
At 1:00 PM  
Woodfords Community Gym  
Potluck Dinner please bring a dish

IN LOVING MEMORY OF  
CLINTON ERIC JOHN SR.  
AKA  
"CLINT"



SERVICES  
Monday March 25, 2024  
At 1:00 PM  
Woodfords Community Gym  
Potluck Dinner please bring a dish or drinks